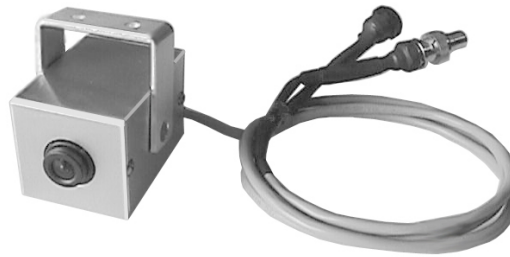




CSC12

PLUG AND PLAY DESIGNER MINATURE CAMERA



DESCRIPTION

The CHASE SECURITY DESIGNER MINATURE CAMERA has been designed for use in convenience stores, restaurants, dock areas, parking areas, banks, hotels, correctional facilities, stadiums, warehouses, HUD projects, apartment buildings, homes, educational facilities, hospitals, parks, mass transit and vehicular operations. The low profile camera enclosure blends in to the décor and provides discrete surveillance in lobby areas, hallways, money counting, patron areas, store isles, parking lots and many other locations where both functionality and aesthetics count.

The camera's enclosure provides strength and ease of installation and maintenance of equipment once installed. For over 30 years Chase security products have been manufactured in a variety of sizes, styles and finishes, and sold to OEM accounts and distribution.

Can be used in a variety of indoor and outdoor applications.

FEATURES

- ◆ Enclosure constructed of brushed aluminum.
- ◆ All welded and reinforced construction.
- ◆ Finish: aluminum.
- ◆ Dimensions: 1 1/2" x 1 1/2" x 2".
- ◆ Can be provided with a special electrical provisions for electrical conduit.
- ◆ Chase custom designs and builds to your specifications.

Chase Security Systems, Inc., an MBE Enterprise, draws from over 30 years of experience selling to the Fire, Security, Computer, Sound, Forestry, Communications, Telecommunications, and Food Processing industries. Many of our signature products are now being produced by other manufacturers but our cameras and their enclosures are still the product of choice .

**P.O. Box 30179, Chicago, IL 60630,
Phone 773.775.7148, Fax 773.594.0078**

www.chasesec.com

© 2006 Chase Security Systems, Inc.



Made with Pride in the U.S.A.

Due to changes in industry, exact product dimensions and features may differ slightly from above.