



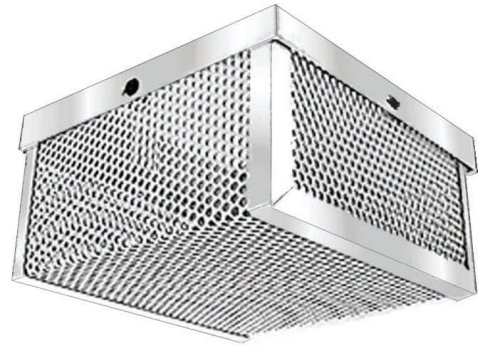
CSGP 884

SMOKE DETECTOR / STROBE / BELL GUARD

DESCRIPTION

The CHASE SECURITY PERFORATED METAL GUARD has been designed to protect smoke detectors, strobes, bells, and other devices against vandalism or accidental damage. It is designed for Prisons, HUD Projects, Universities, Hotels, Parks, Schools, Hospitals, and other public locations where both functionality and aesthetics count.

Chase two-piece construction perforated metal guard is capped for safety and provides for ease of installation and maintenance of equipment once installed. For over 30 years Chase perforated metal products have been manufactured in a variety of sizes, styles and finishes, and sold to OEM accounts and distribution.



Can be used in a variety of applications.

FEATURES

- ◆ Constructed of quality 16-gauge perforated steel with 3/16" diameter on 1/4" staggered centers.
- ◆ Welded at all sides with reinforcement for a solid unit construction.
- ◆ Finish: white epoxy coating.
- ◆ Dimensions I.D. 7 1/2" x 7 1/2" x 4" deep.
- ◆ Easy to install.
- ◆ Additional models available with 2" frames.
- ◆ Chase custom designs and builds to your specifications.

ACCESSORIES

- ◆ Matching custom service plates available for wall or conduit applications.

Chase Security Systems, Inc., an MBE Enterprise, draws from over 30 years of experience selling to the Fire, Security, Computer, Sound, Food Processing, Forestry, Communications and Telecommunications industries. Many of our signature products are now being produced by other manufacturers but our perforated metal enclosures are still the product of choice for their strength.

P.O. Box 30179, Chicago, IL 60630,
Phone 773.775.7148, Fax 773.594.0078

www.chasesec.com

© 2006 Chase Security Systems, Inc.



Made with Pride in the U.S.A.

Due to changes in industry, exact product dimensions and features may differ slightly from above.