



SP 7-50

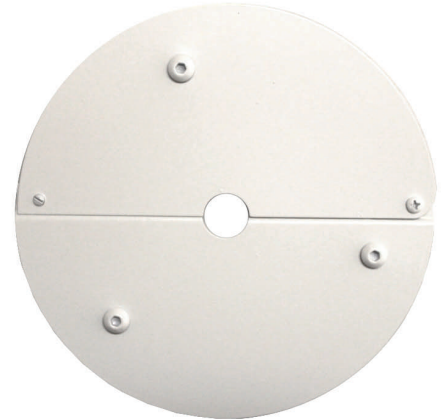
SERVICE PLATE

For Chase Security Wire Guard
Model: CSSPW 433, CSSPW 426 and
CSSPW 428

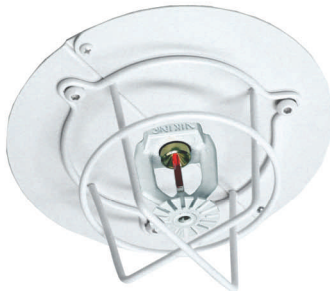
DESCRIPTION

The CHASE SECURITY SERVICE PLATE has been designed to for use in areas where sprinklers are installed along pipe but no ceilings or walls are present. The service plate creates a mounting surface for wire guards to be easily installed to protect the enclosed sprinkler head.

The steel service plate provides strength and ease of installation and maintenance of equipment once installed. For over 30 years Chase Security products have been manufactured in a variety of sizes, styles and finishes, and sold to OEM accounts and distribution. They are installed by Government Institutions, Prisons, HUD, Projects, Universities, Hotels, Parks, Schools, Hospitals, and other public locations where both functionality and aesthetics count.



Patent Pending



FEATURES

- ◆ Constructed of quality 16-gauge steel.
- ◆ Plate divides along center and is easily secured back with single screw.
- ◆ Can be mounted without removing installed sprinkler head.
- ◆ Works with most 1/2" IPS sprinkler heads.
- ◆ Finish: White or red polyester coating.
- ◆ Dimensions: 7.25" diameter, 3/4" opening.
- ◆ Compatible with Chase's CSSPW 433, 426, and 428 wire guards.

Chase Security Systems, Inc., an MBE Enterprise, draws from over 30 years of experience selling to the Fire, Security, Computer, Sound, Food Processing, Forestry, Communications and Telecommunications industries. Many of our signature products are now being produced by other manufacturers but our steel hoods are still the product of choice for their strength.

P.O. Box 30179, Chicago, IL 60630,
Phone 773.775.7148, Fax 773.594.0078

www.chasesec.com

© 2006 Chase Security Systems, Inc.



Made with Pride in the U.S.A.

Due to changes in industry, exact product dimensions and features may differ slightly from above.